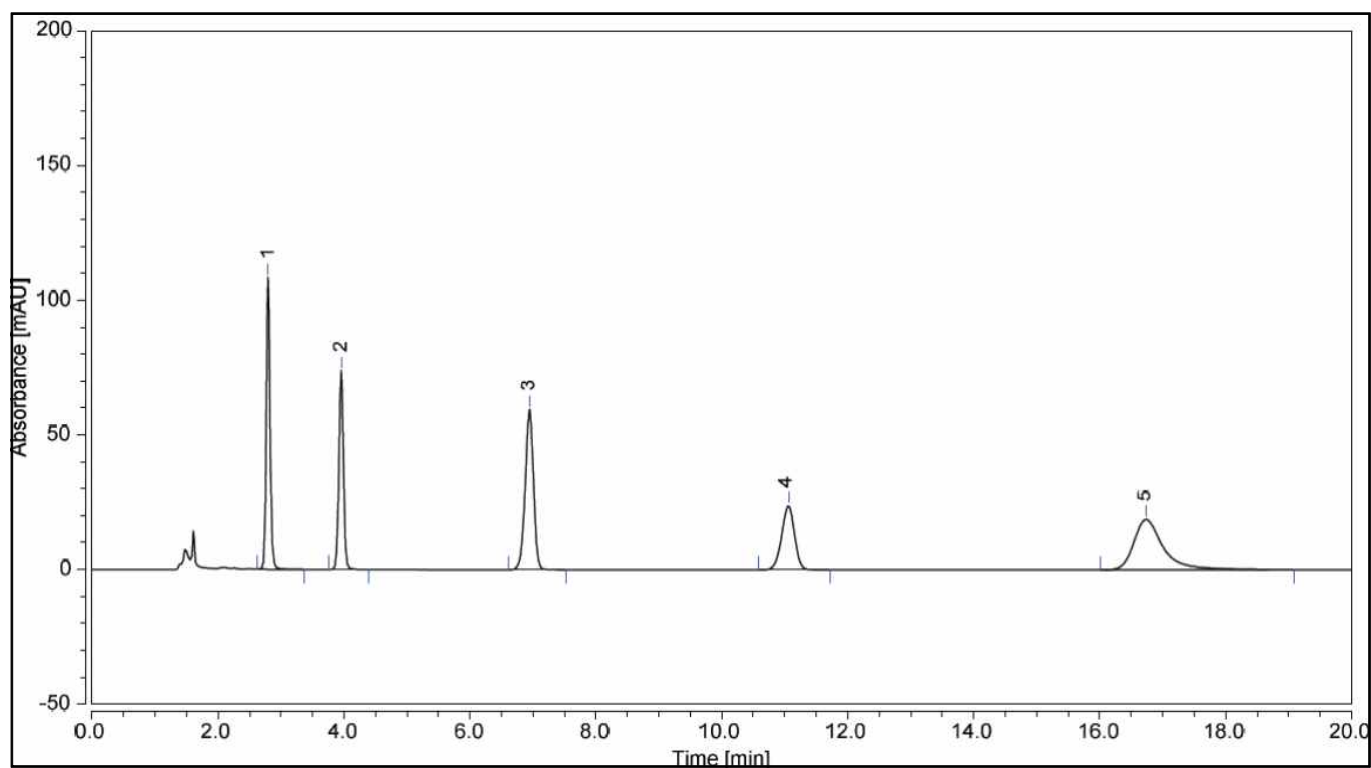


HPLC DATA SHEET

Nucleic acids (5 kinds)



1. Cytosine 2. Uracil 3. Guanine 4. Thymine 5. Adenine

HPLC condition

Column INNO Column C18 (5 μ m, 4.6mm I.d. \times 150mm)
Mobile Phase 20mM Potassium Phosphate buffer
Flow rate 1.0 mL/min
Temperature 35 $^{\circ}$ C
Detector UV (254nm)