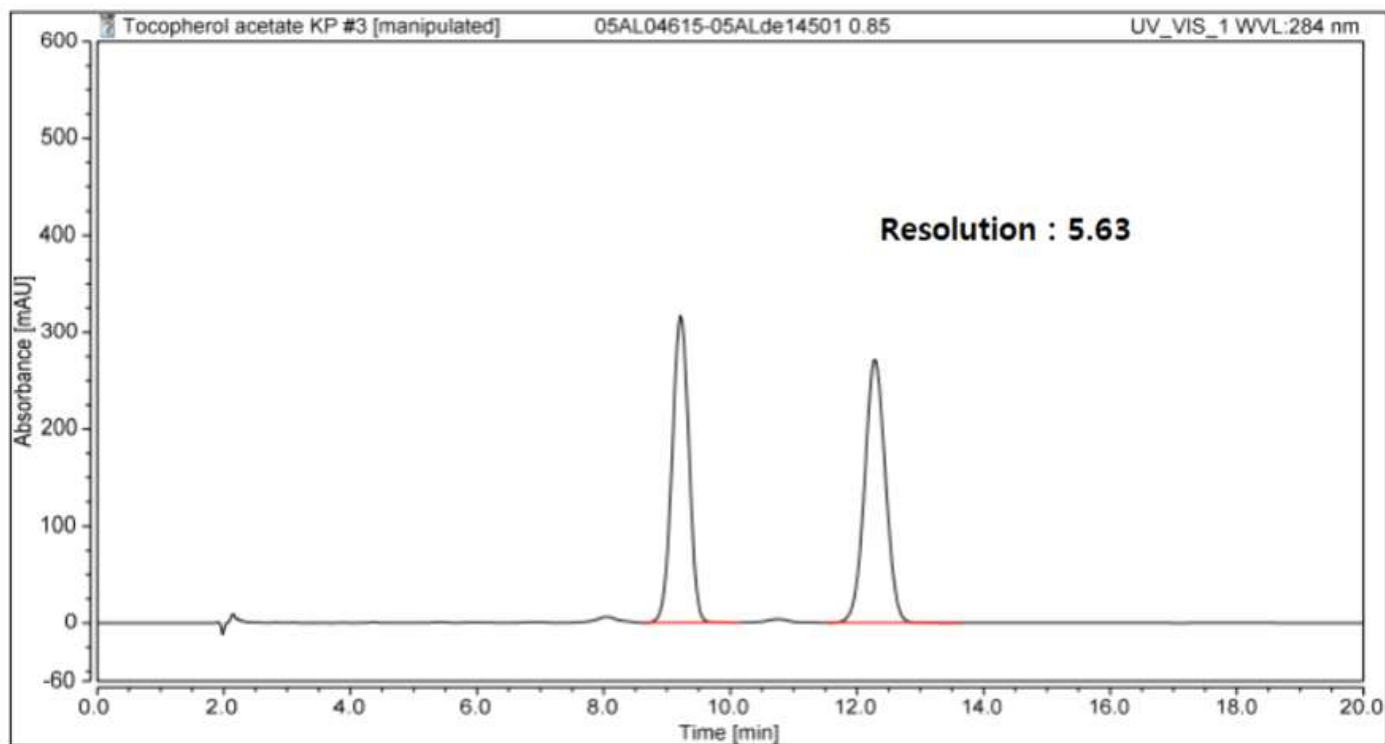


# HPLC DATA SHEET

## Tocopherol Acetate (KP, Assay)



1. Tocopherol
2. Tocopherol Acetate

### HPLC condition

Column Aegispak C18-L 5um, 4.6mm I.d. × 150mm (P/N = 05AL04615)

Mobile Phase Methanol : Water (49 : 1)

Flow rate Adjust so that the retention time of Tocopherol Acetate is about 12 minutes  
(About 0.85 mL/min)

Temperature 35 °C

Detector UV (284 nm)

Injection Volume 20 uL