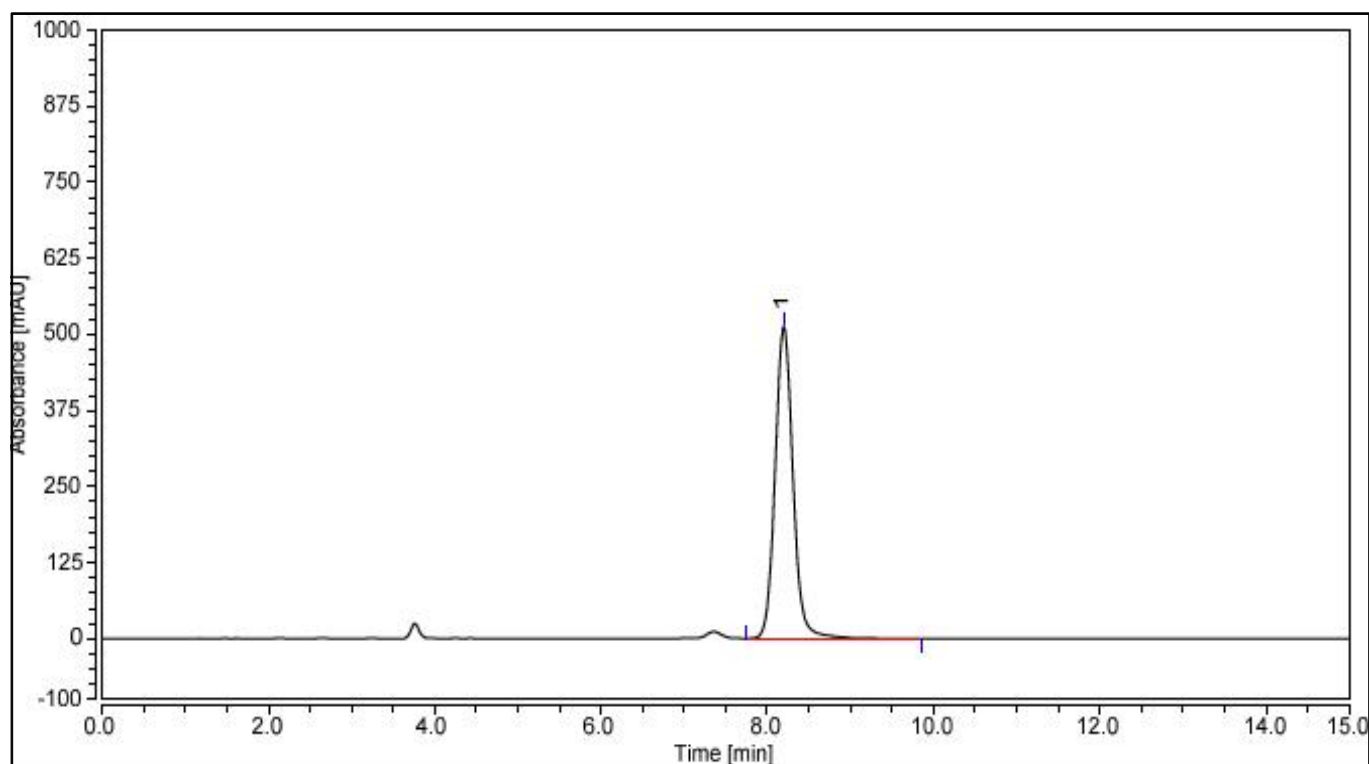


# HPLC DATA SHEET

## Omeprazole (JP, Related substances)



### 1. Omeprazole (JP, Related substances)

#### HPLC condition

Column	Aegispak C8 (5um, 4.0mm I.d. × 150mm)
Mobile Phase	ACN / Buffer*= 11 / 29 *Buffer: Dissolve 2.83g of disodium hydrogen phosphate dodecahydrate and 0.21g of sodium dihydrogen phosphate dihydrate in water to make 1000mL (pH7.6)
Flow rate	Adjust so that the retention time of omeprazole is about 8 minutes
Temperature	25℃
Detector	UV (280nm)