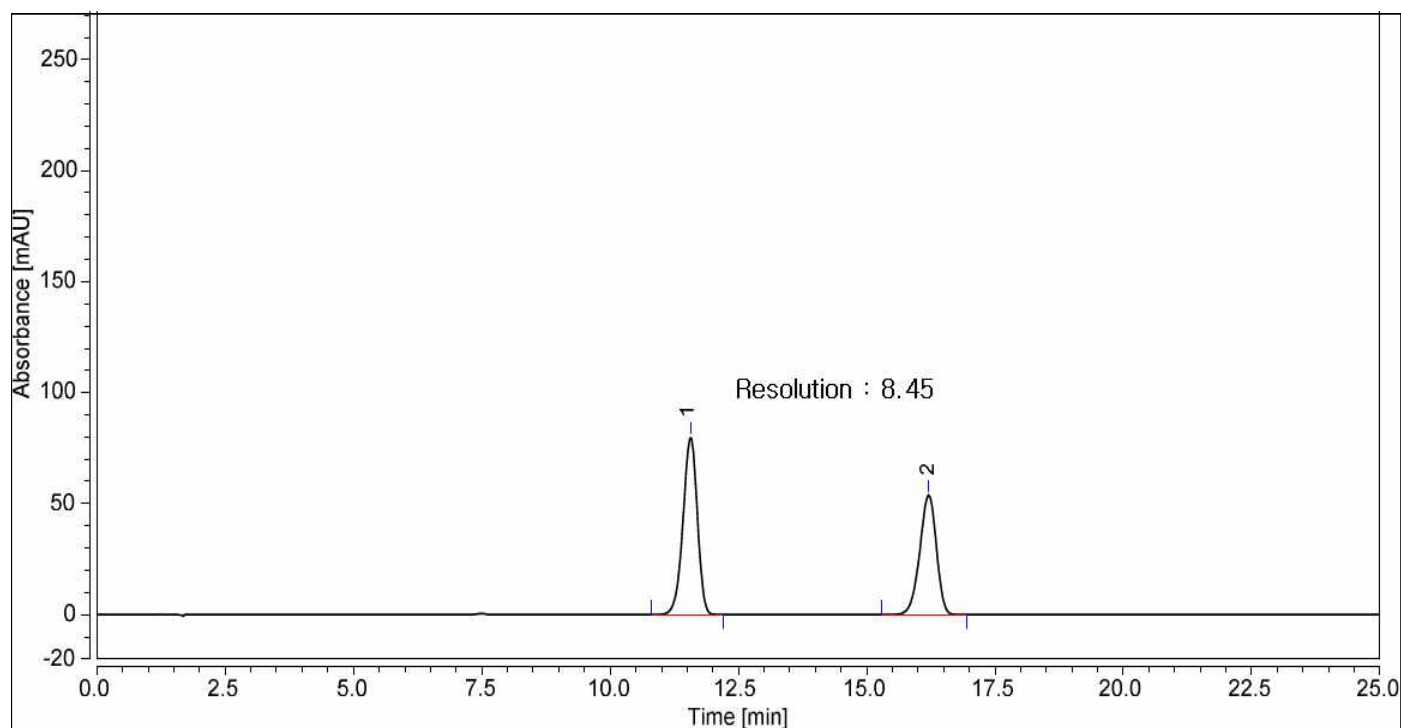


HPLC DATA SHEET

Rebamipide (JP, Related substances)



1. Rebamipide 2. 4-Chlorobenzoate

HPLC condition

Column INNO Column C18-HC (5 μ m, 4.6mm I.d. \times 250mm)

Mobile Phase 2.44g of sodium 1-decanesulfonate in 1000mL of water and to this solution add 1000mL of methanol and 10mL of phosphoric acid.

Flow rate Adjust so that the retention time of rebamipide is about 12 minutes.

Temperature 40 $^{\circ}$ C

Detector UV (232nm)