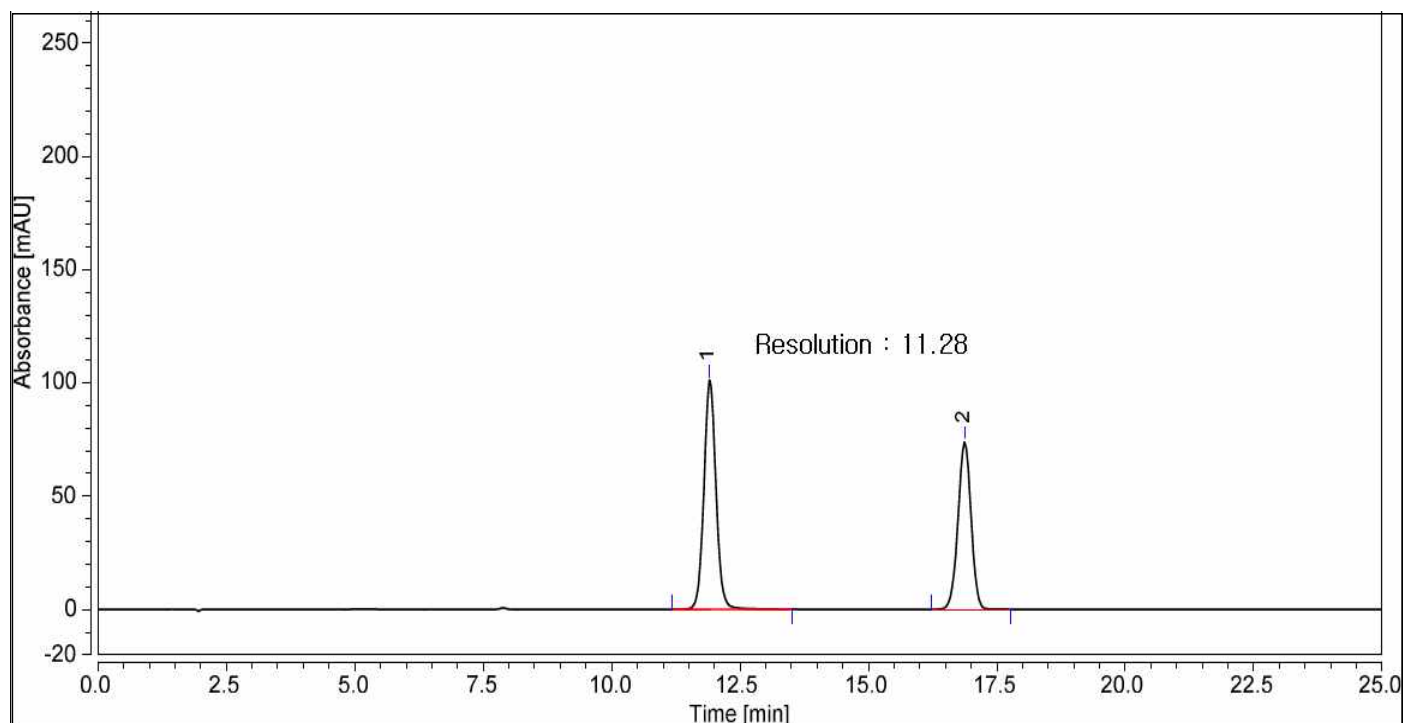


# HPLC DATA SHEET

Rebamipide (JP, Related substances)



1. Rebamipide    2. 4-Chlorobenzoate

## HPLC condition

Column                    INNO Column C18-SB (5 $\mu$ m, 4.6mm I.d.  $\times$  250mm)

Mobile Phase            2.44g of sodium 1-decanesulfonate in 1000mL of water and to this solution add 1000mL of methanol and 10mL of phosphoric acid.

Flow rate                Adjust so that the retention time of rebamipide is about 12 minutes.

Temperature            40 $^{\circ}$ C

Detector                UV (232nm)