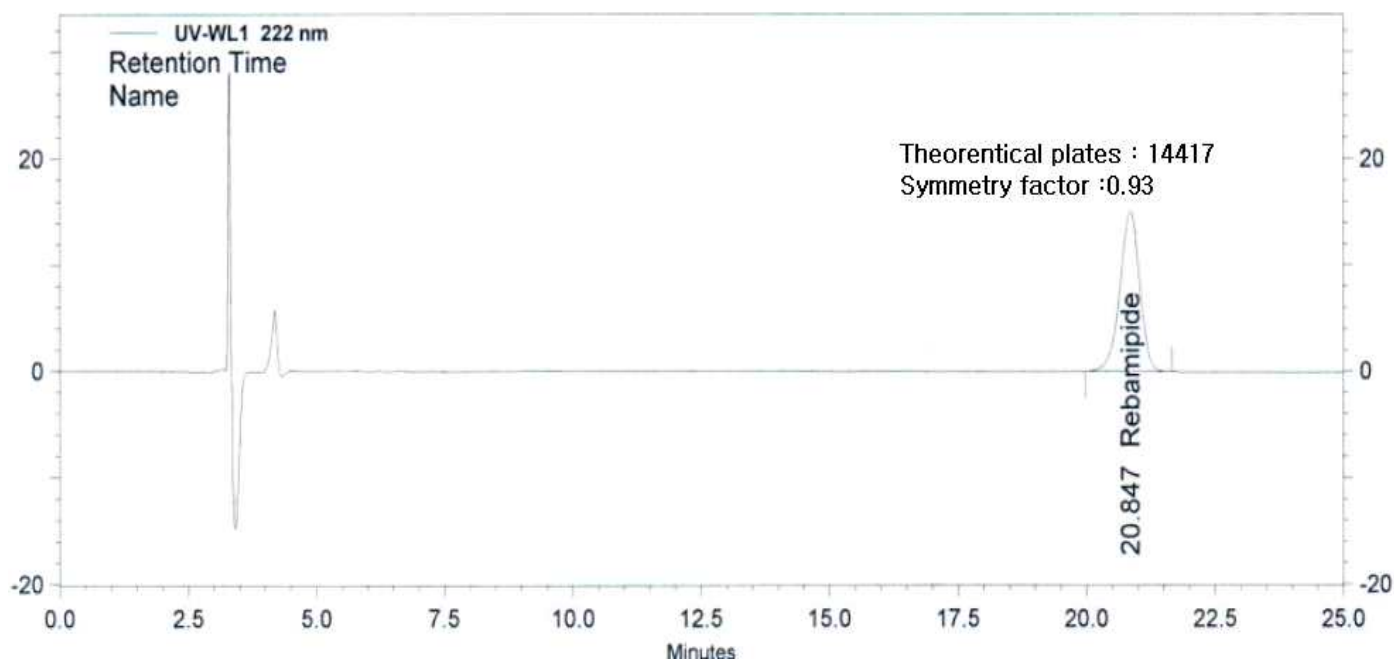


HPLC DATA SHEET

Rebamipide (JP, m-chloro isomer)



1. Rebamipide

HPLC condition

Column	Aegispak C18-F (5um, 4.6mm I.d. × 150mm)
Mobile Phase	To 300mL of phosphate buffer solution(pH6.2) add 750mL of water. To 830mL of this solution add 170mL of acetonitrile.
Flow rate	Adjust so that the retention time of rebamipide is about 20 minutes.
Temperature	25°C
Detector	UV (222nm)