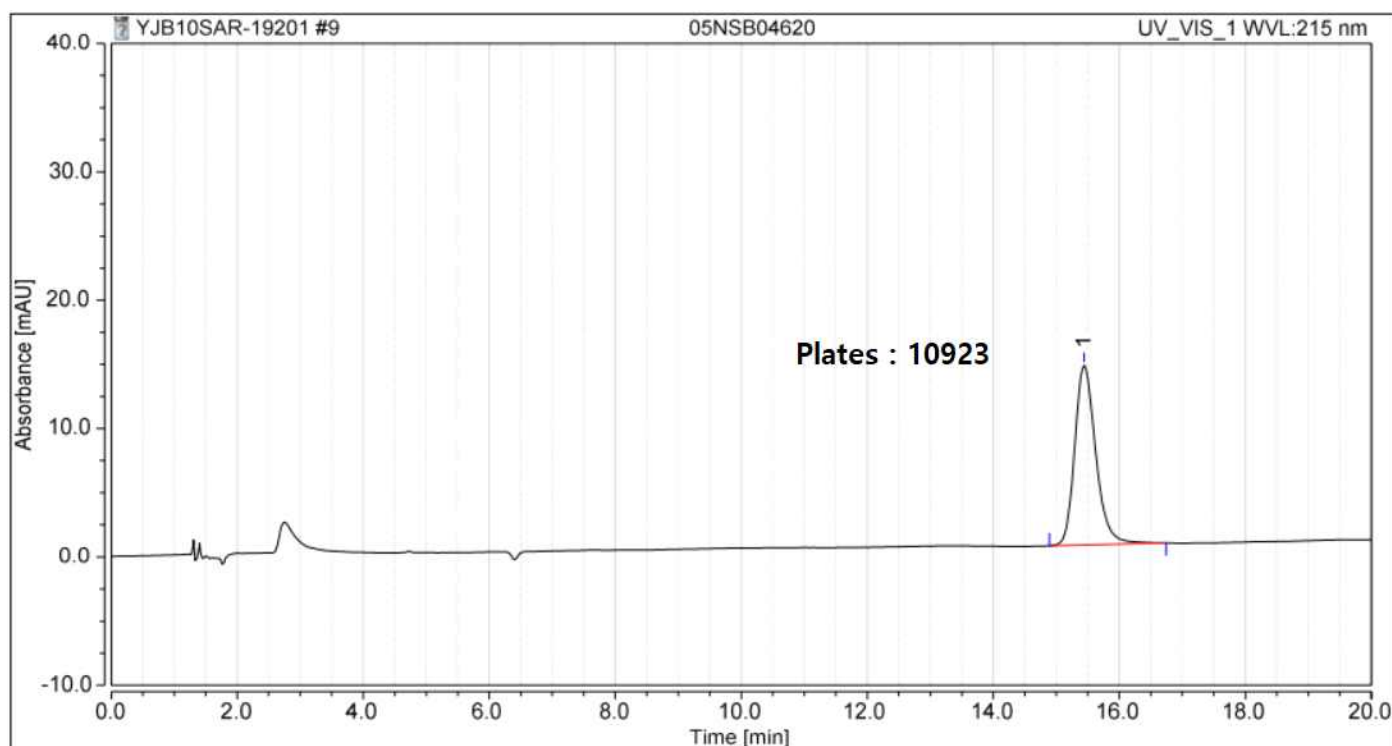


HPLC DATA SHEET

Clotrimazole Vaginal Tablets (USP, Related substances)



1. Clotrimazole

HPLC condition

Column INNO Column C18-SB (5 μ m, 4.6mm I.d. \times 200mm)

Mobile Phase 0.02M Phosphoric acid : Methanol (30 : 70) (Adjust with 10% triethylamine in methanol to a pH of 7.5)

Flow rate 1.5mL/min

Temperature 25 $^{\circ}$ C

Detector UV (215nm)