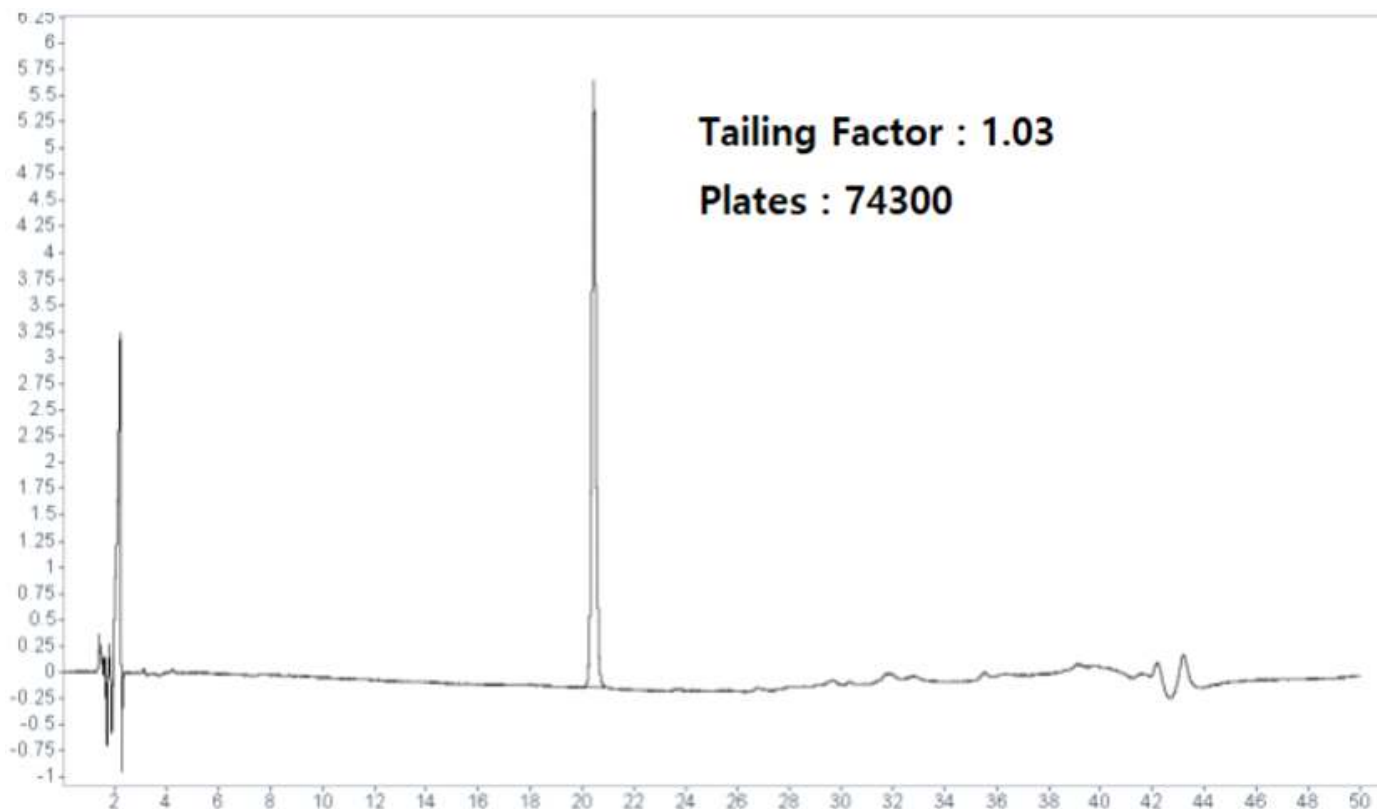


HPLC DATA SHEET

Mosapride Citrate Tablets (KP, Related substances)



1. Mosapride

HPLC condition

Column Aegispak C18-L (5 μ m, 4.6mm I.d. \times 150mm)
Mobile Phase A : Dissolve 8.82 g of trisodium citrate dihydrate in 800 mL of water, adjust the pH to 4.0 with dilute hydrochloric acid, and add water to make 1000 mL
Mobile Phase B : Acetonitrile

Mobile Phase

Time	Mobile Phase A	Mobile Phase B
0	85	15
40	45	55
40.1	85	15
50	85	15

Flow rate 1.0mL/min
Temperature 40 $^{\circ}$ C
Detector UV (274nm)