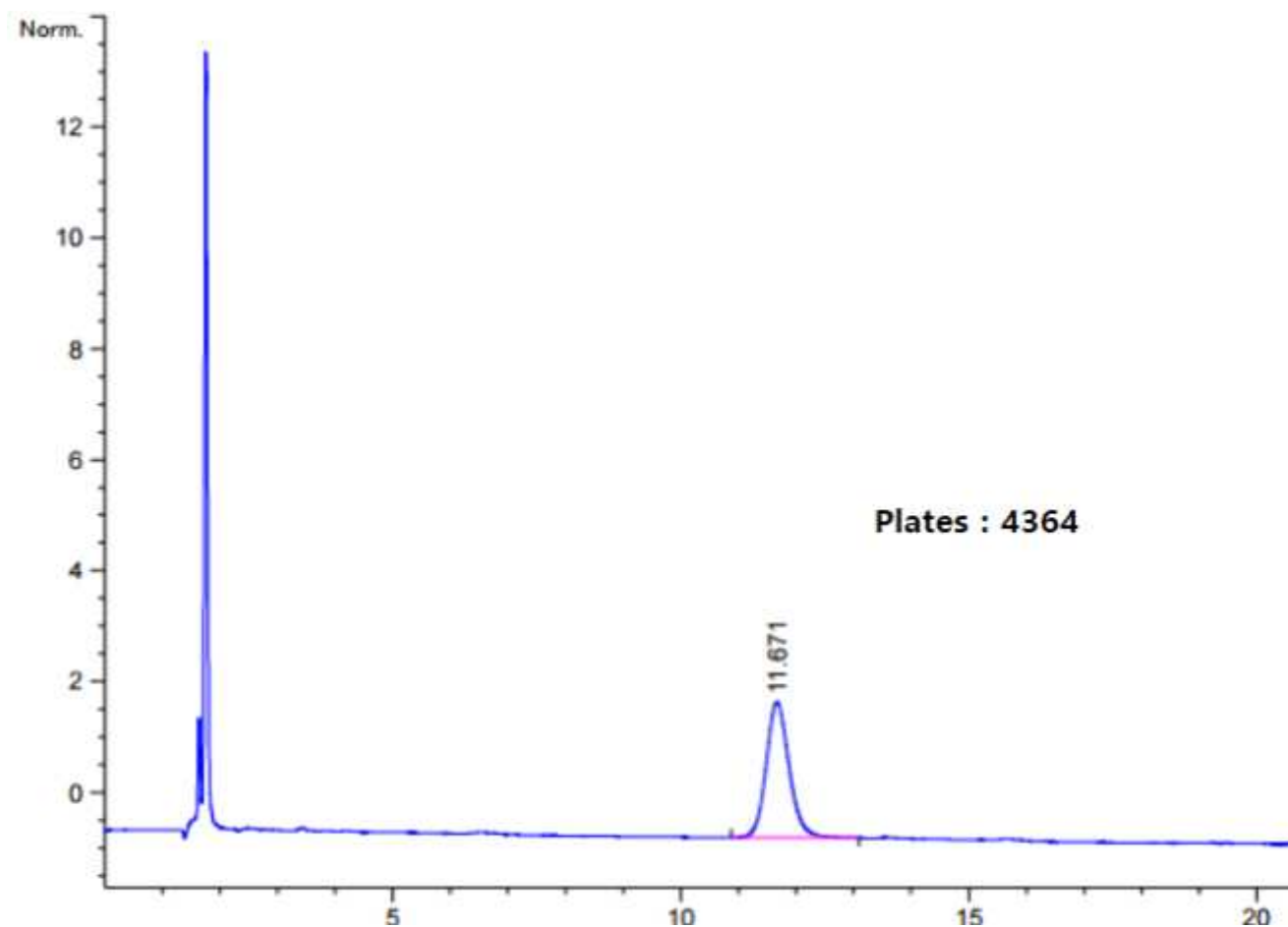


HPLC DATA SHEET

Chlorpheniramine Maleate (KP, Related substances)



1. Chlorpheniramine maleate

HPLC condition

Column	INNO Column C18 (10um, 3.9mm I.d. × 300mm)
Mobile Phase	Mix 200 volumes of Acetonitrile and 800 volumes of a solution containing 8.57g/L of Ammonium dihydrogen phosphate and 1mL/L of phosphoric acid
Flow rate	Adjust so that the retention time of chlorpheniramine is about 11 minutes
Temperature	25°C
Detector	UV (225nm)