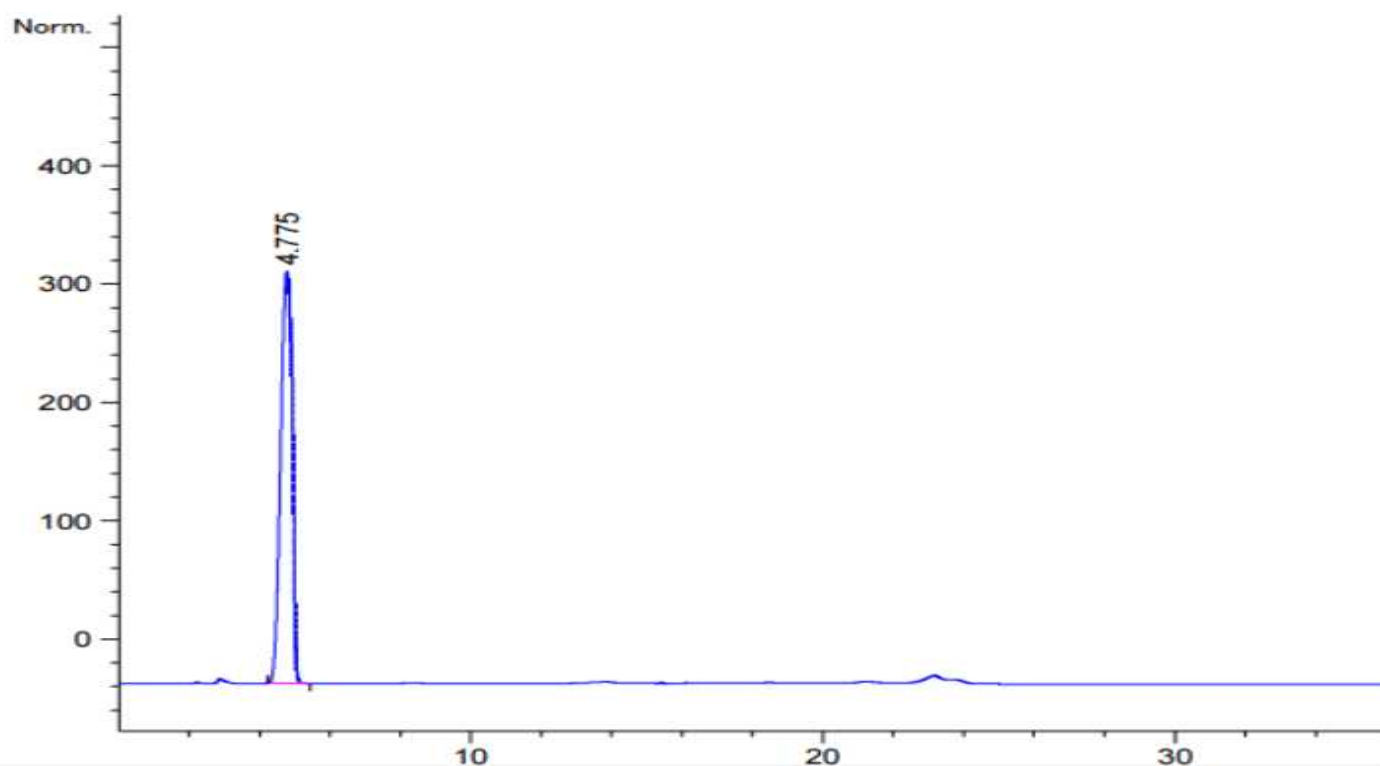


# HPLC DATA SHEET

## Cisplatin Injection (Assay)



1. Cisplatin

### HPLC condition

Column INNO Column NH2 (5um, 4.6mm I.d. × 250mm)

Mobile Phase Acetonitrile : Water ( 90 : 10 )

Flow rate 1.5mL/min

Temperature 27°C

Detector UV (220nm)