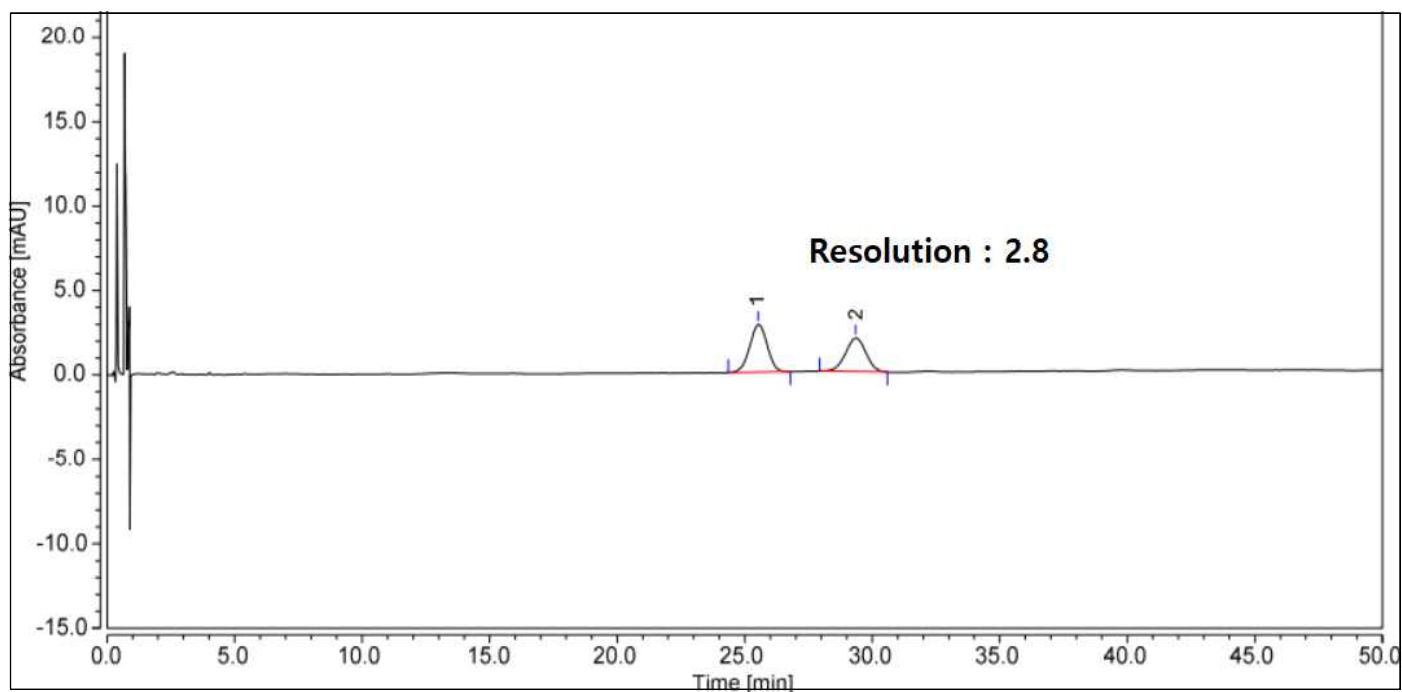


HPLC DATA SHEET

Ginsenoside (Assay)



1. Ginsenoside Rg₁ 2. Ginsenoside Re

HPLC condition

Column Aegispak C18-F (5 μ m, 4.6mm I.d. × 150mm)

Mobile Phase Acetonitrile : Water = 1 : 4

Flow rate Adjust so that the retention time of Ginsenoside Rg₁ is about 25 minutes.

Temperature Column : 30°C

Injection Vol. 10 μ L

Detector UV (203nm)