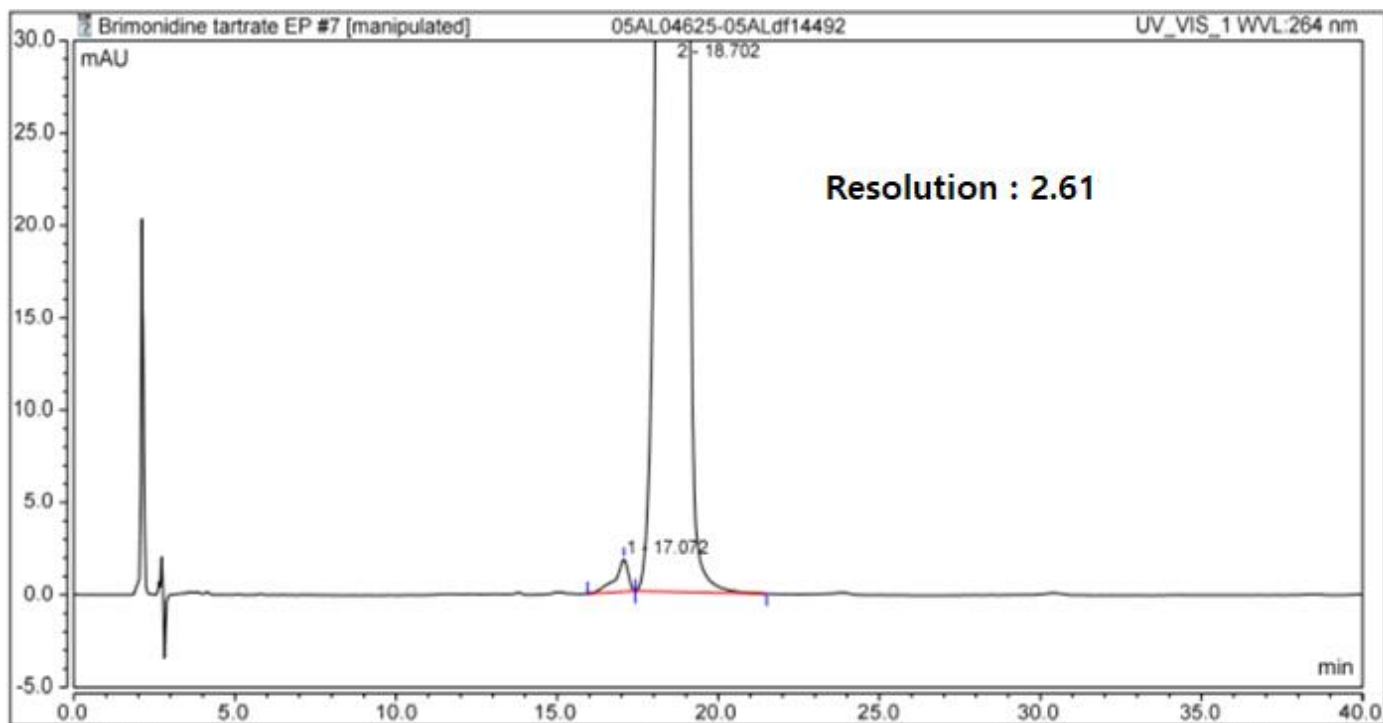


HPLC DATA SHEET

Brimonidine Tartrate (EP, Related substances)



1. Impurity E
2. Brimonidine tartrate

HPLC condition

Column	Aegispak C18-L 5 μ m, 4.6mm I.d. \times 250mm (P/N = 05AL04625)
Mobile Phase	Dissolve 2.6 g of sodium heptanesulfonate R in 310 mL of methanol, add 2.5 mL of triethylamine and 7.5 mL of glacial acetic acid, and dilute to 1000 mL with water.
Flow rate	1.0 mL/min
Temperature	30 $^{\circ}$ C
Detector	UV (264 nm)
Injection Volume	20 μ L