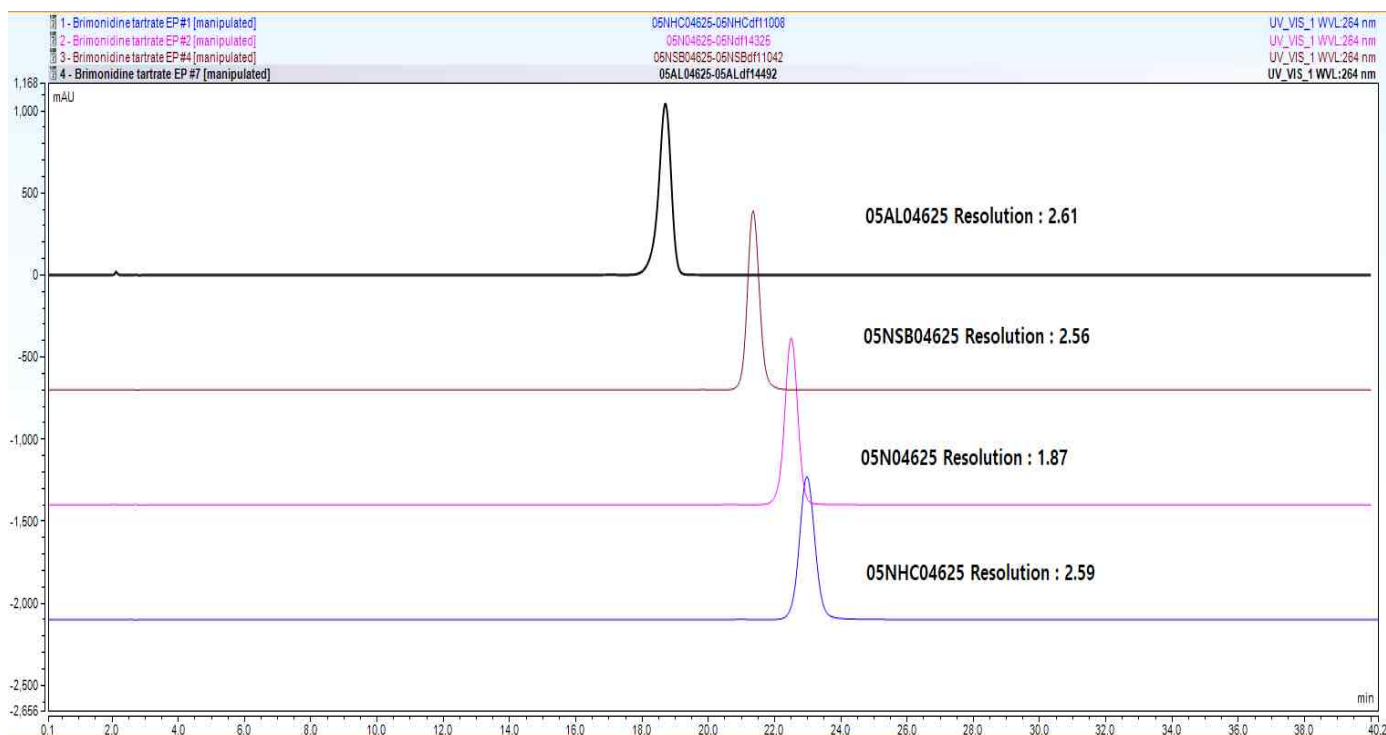


HPLC DATA SHEET

Brimonidine Tartrate (EP, Related substances)



1. Impurity E 2. Brimonidine tartrate

HPLC condition

Column Aegispak C18-L 5um, 4.6mm I.d. × 250mm (P/N = 05AL04625)
INNO Column C18-SB 5um, 4.6mm I.d. × 250mm (P/N = 05NSB04625)
INNO Column C18 5um, 4.6mm I.d. × 250mm (P/N = 05N04625)
INNO Column C18-HC 5um, 4.6mm I.d. × 250mm (P/N = 05NHC04625)

Mobile Phase Dissolve 2.6 g of sodium heptanesulfonate R in 310 mL of methanol, add 2.5 mL of triethylamine and 7.5 mL of glacial acetic acid, and dilute to 1000 mL with water.

Flow rate 1.0 mL/min

Temperature 30 °C

Detector UV (264 nm)

Injection Volume 20 uL