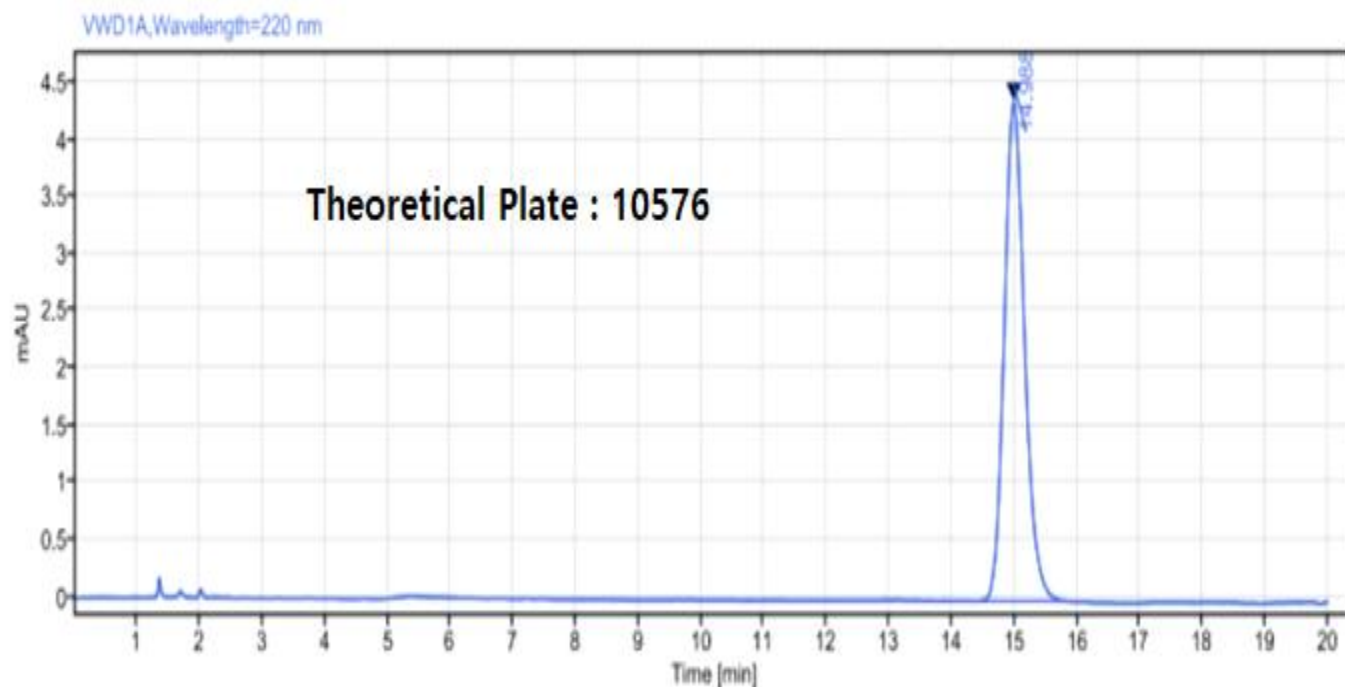


HPLC DATA SHEET

Lafutidine (JP, Related substances)



1. Lafutidine

HPLC condition

| | |
|------------------|---|
| Column | Aegispak C18-LA 5 μ m, 6.0mm I.d. \times 150mm (P/N 05ALA06015) |
| Mobile Phase | Dissolve 0.87 g of sodium 1-pentanesulfonate in 1000 mL of diluted phosphoric acid (1 in 1000). To 850 mL of this solution add 150 mL of acetonitrile |
| Flow rate | Adjust so that the retention time of lafutidine is about 15 minutes (About 1.75 mL/min) |
| Temperature | 40 $^{\circ}$ C |
| Detector | UV (220 nm) |
| Injection Volume | 5 μ L |