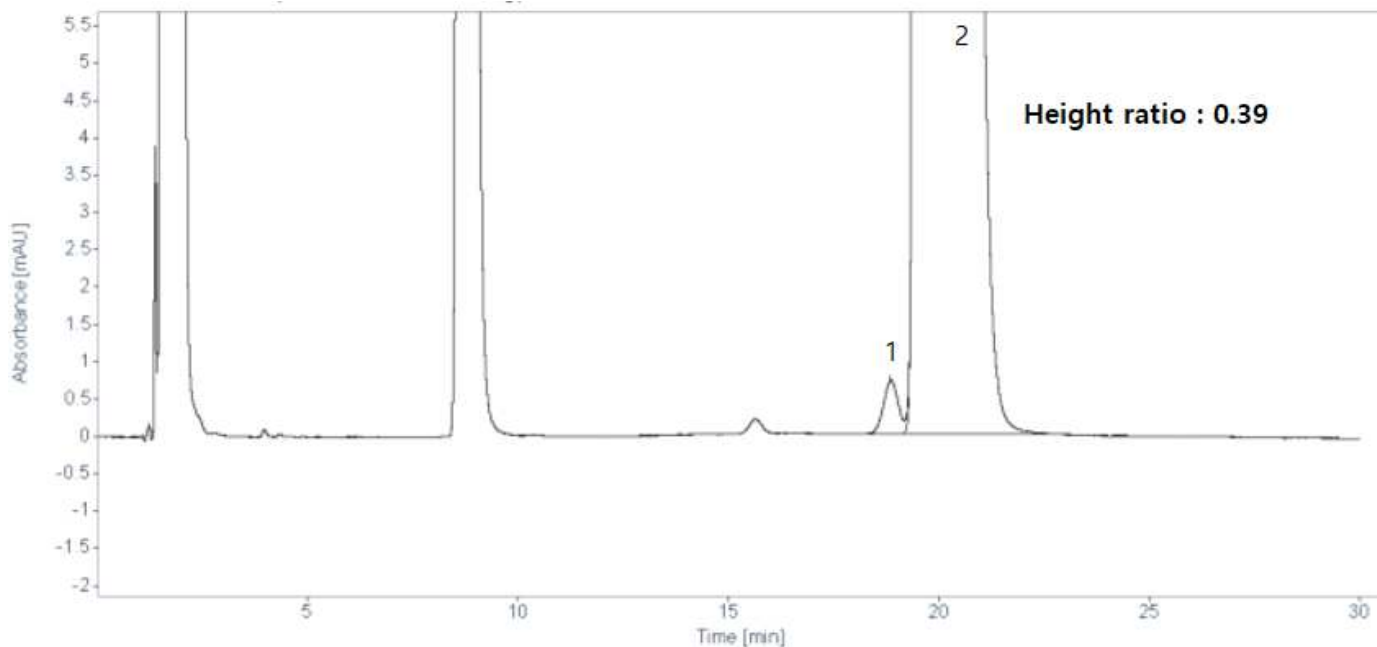


HPLC DATA SHEET

Rebamipide Tablets (m-Chloro isomer)



1. m-chloro isomer 2. Rebamipide

HPLC condition

Column Aegispak C18-L 5um, 4.0mm I.d. × 150mm (P/N 05AL04015)

Mobile Phase Dissolve 0.58g of sodium phosphate dibasic anhydrous and 2.0g of monopotassium phosphate in 1,000mL of water and filter it with a membrane filter of not more than 0.45um. Take 830mL of an extra solution and add 170mL of acetonitrile.

Flow rate Adjust so that the retention time of rebamipide is about 20 minutes
(About 0.9 mL/min)

Temperature 25 °C

Detector UV (254 nm)

Injection Volume 20 uL