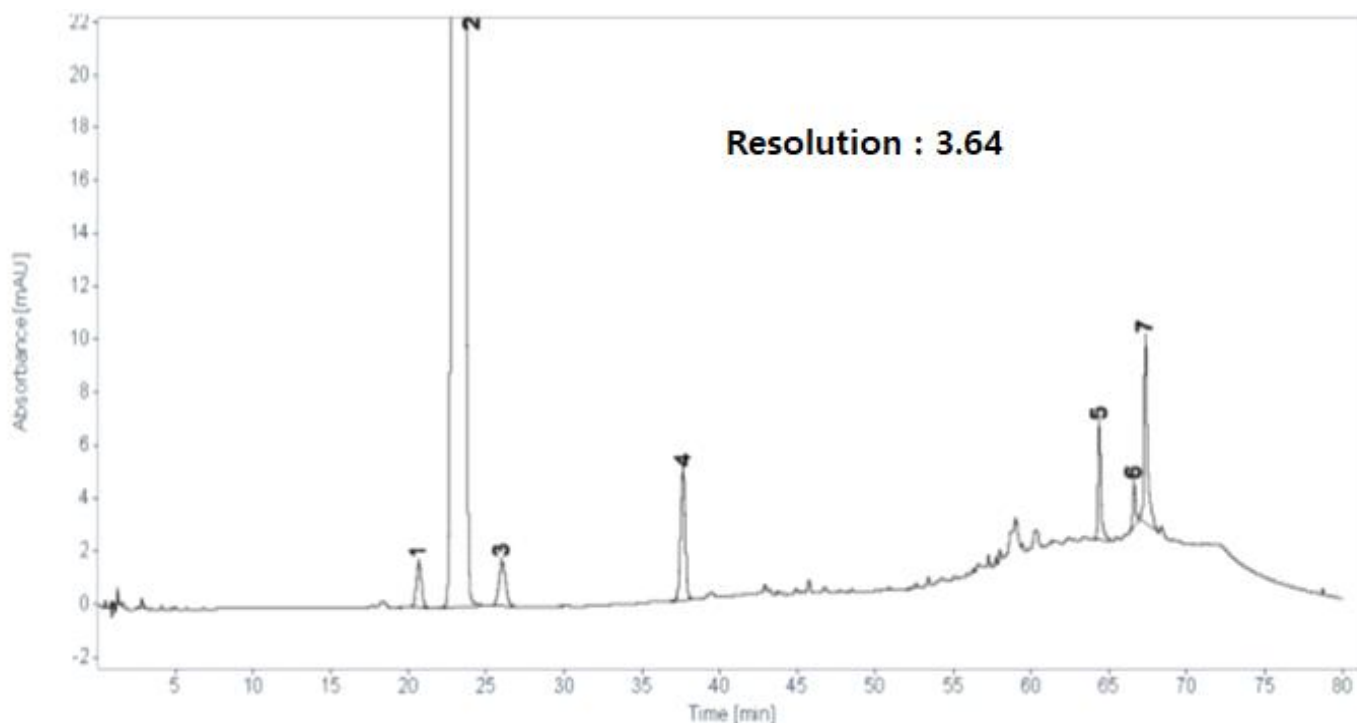


HPLC DATA SHEET

Rosuvastatin calcium (EP, Related substances)



1. Impurity A 2. Rosuvastatin calcium 3. Impurity B 4. Impurity C 5. Impurity E
6. Impurity J 7. Impurity F

HPLC condition

Column INNO Column C18 3um, 3.0mm I.d. × 150mm (P/N 03N03015)

<Gradient system>

Time (min)	Solution A	Solution B
0 - 30	100	0
30 - 50	100 → 60	0 → 40
50 - 60	60 → 0	40 → 100
60 - 70	0	100

Mobile Phase

* Solution A : 1 % Trifluoroacetic acid : Acetonitrile : water (1 : 29 : 70)

* Solution B : 1 % Trifluoroacetic acid : water : Acetonitrile (1 : 24 : 75)

Flow rate 0.75 mL/min

Temperature 40 °C

Detector UV (242 nm)

Injection volume 10 uL