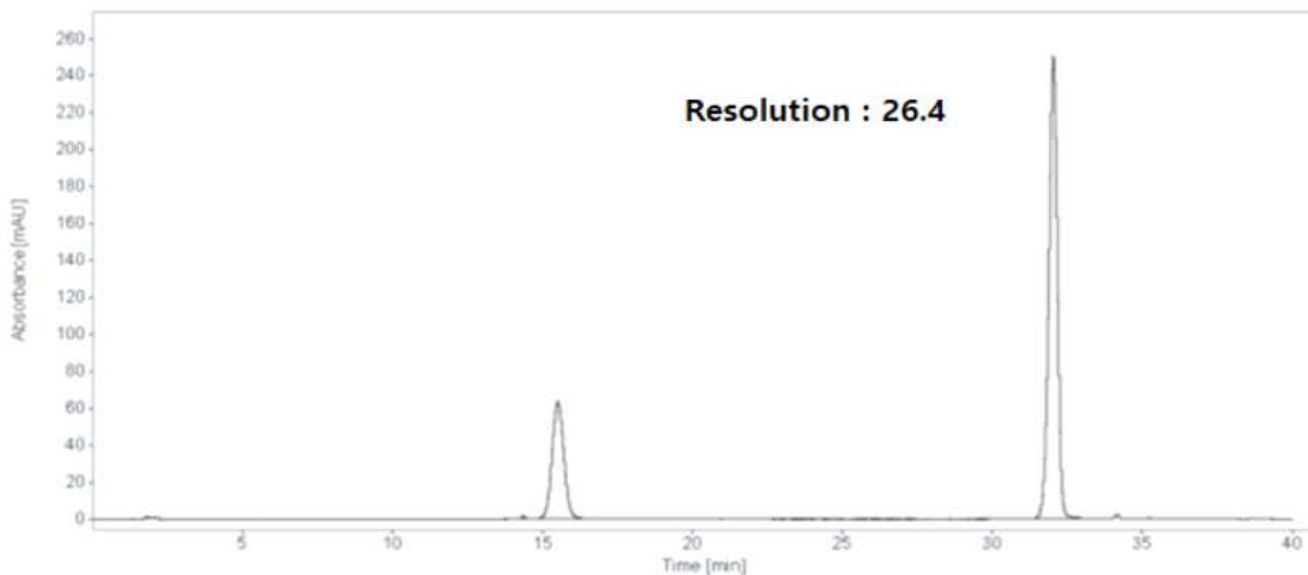


HPLC DATA SHEET

Jaceosidin & Eupatilin (애엽)



1. Jaceosidin 2. Eupatilin

HPLC condition

Column INNO Column C18-SB 5um, 4.6mm I.d. × 150mm (P/N 05NSB04625)

<Gradient System>

Time (min)	Solution A(%)	Solution B(%)
0	70	30
28	70	30
30	30	70
31	30	70
31.01	70	30
35	70	30

Mobile Phase

* Solution A : Dissolve 2.72g of sodium phosphate monobasic in 1L of water and adjust pH 3.0 with phosphoric acid

* Solution B : Acetonitrile

Flow rate 1.0 mL/min

Temperature 30°C

Detector UV (345 nm)

Injection volume 10 uL