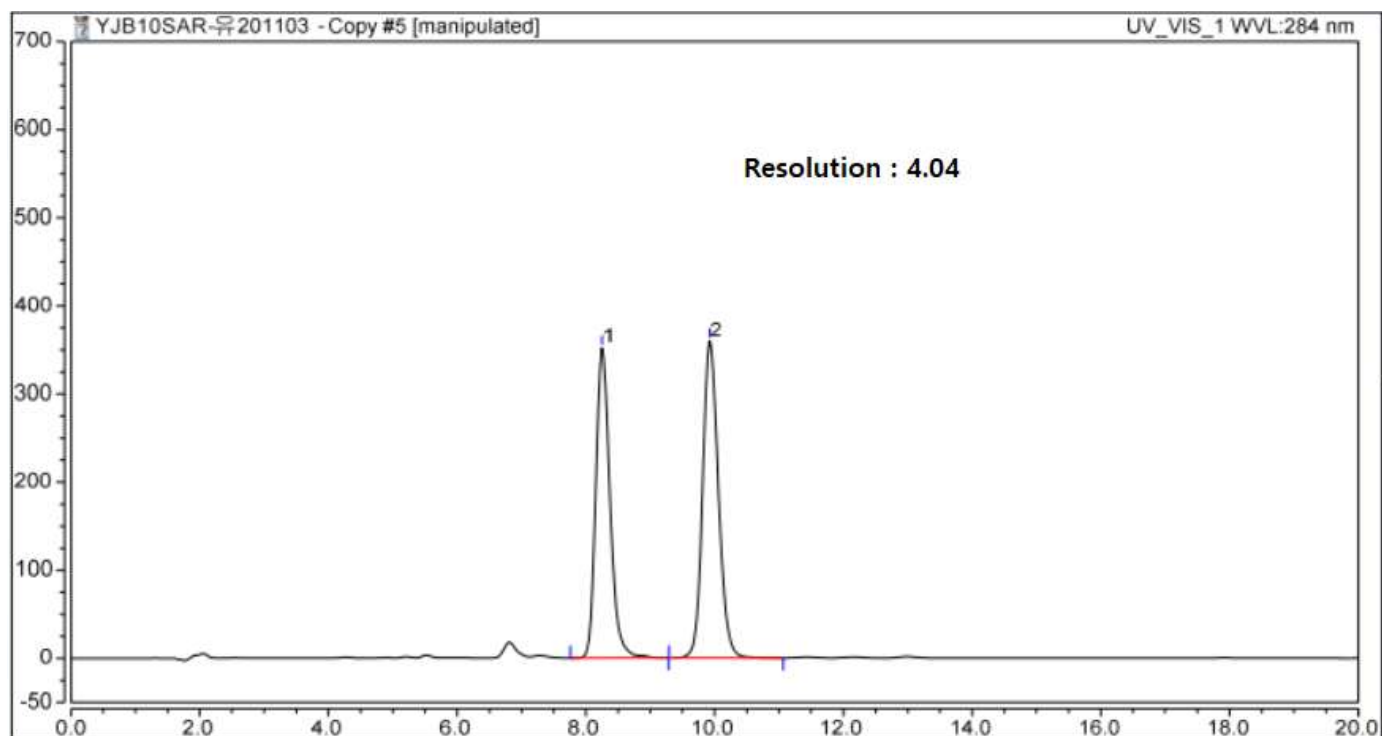


# HPLC DATA SHEET

## Tocopherol Calcium Succinate (KP, Assay)



1. Tocopherol succinate
2. Tocopherol

### HPLC condition

Column Aegispak C18-L 5um, 4.0mm I.d. × 150mm (P/N 05AL04015)

Mobile Phase Methanol : water : acetic acid(100) = (97 : 2 : 1)

Flow rate Adjust so that the retention time of tocopherol succinate is about 8 minutes  
(About 0.75 mL/min)

Temperature 25 °C

Detector UV (284 nm)

Injection Volume 20 uL