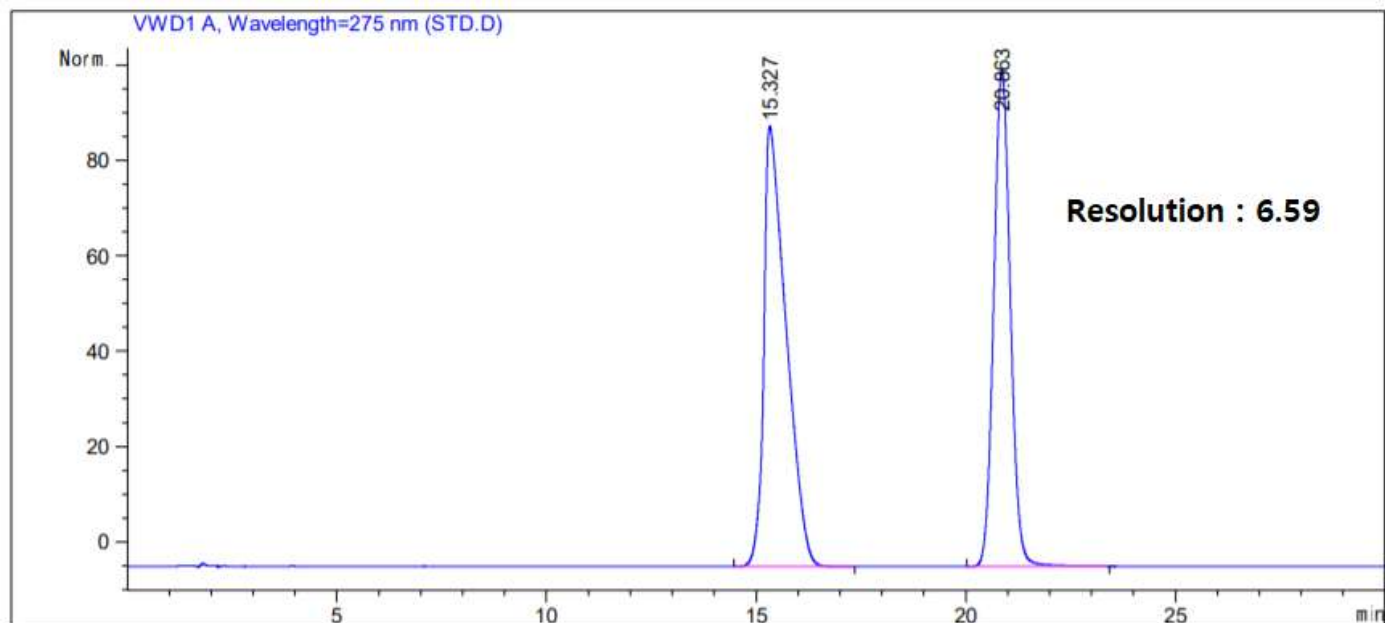


# HPLC DATA SHEET

## Lafutidine Tablets (JP, Assay)



1. Lafutidine
2. Internal standard

### HPLC condition

Column	Aegispak C18-L 5um, 6.0mm I.d. × 150mm (P/N 05AL06015)
Mobile Phase	0.87g of sodium 1-pentanesulfonate in 1000mL of diluted phosphoric acid(1 in 1000). To 850mL of this solution add 150mL of acetonitrile
Flow rate	Adjust so that the retention time of lafutidine is about 15 minutes (About 1.95 mL/min)
Temperature	40 °C
Detector	UV (275 nm)
Injection Volume	5 uL