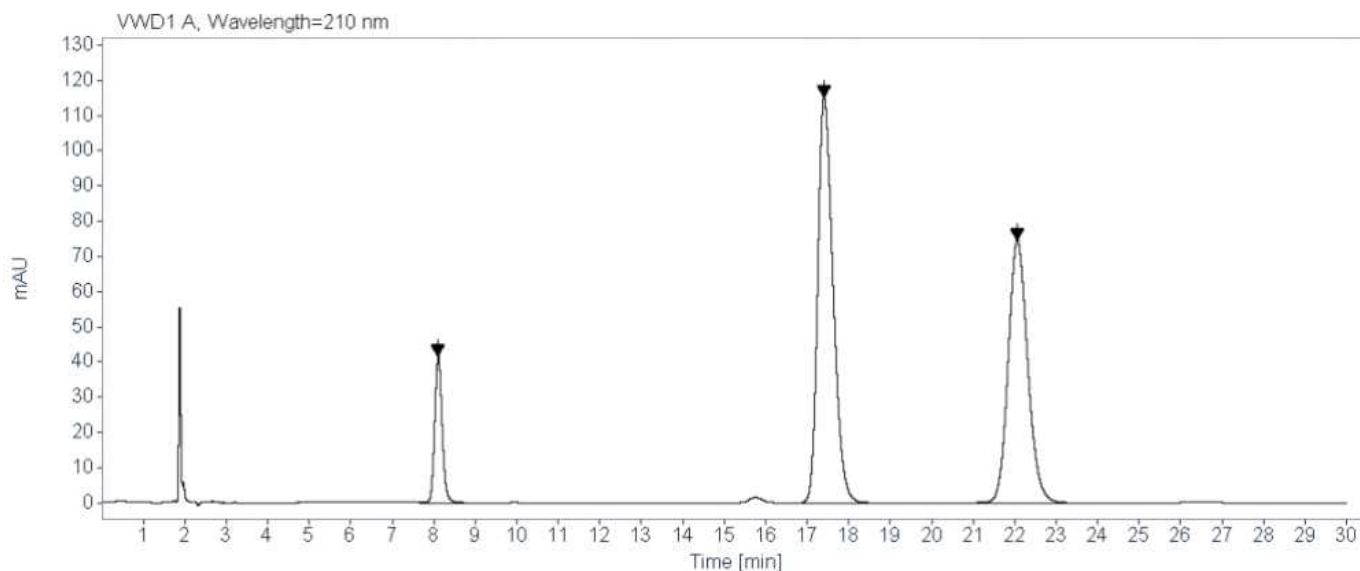


HPLC DATA SHEET

Scopolia Extract (KP, Assay)



1. Scopolamine hydrobromide 2. Atropine sulfate salt 3. Brucine

HPLC condition

Column	Aegispak C18-L 5um, 4.0mm I.d. × 150mm (P/N 05AL04015)
Mobile Phase	6.8g of potassium hydrogen phosphate is dissolved in 900mL of water, 10mL of triethylamine is added, phosphoric acid is added, adjusted to pH 3.5, and then 1000mL of water is added; acetonitrile mixture (9:1).
Flow rate	Adjust the scopolamine retention time to about 8 minutes (about 0.75 mL/min)
Temperature	25 °C
Detector	UV (210 nm)
Injection Volume	10 uL