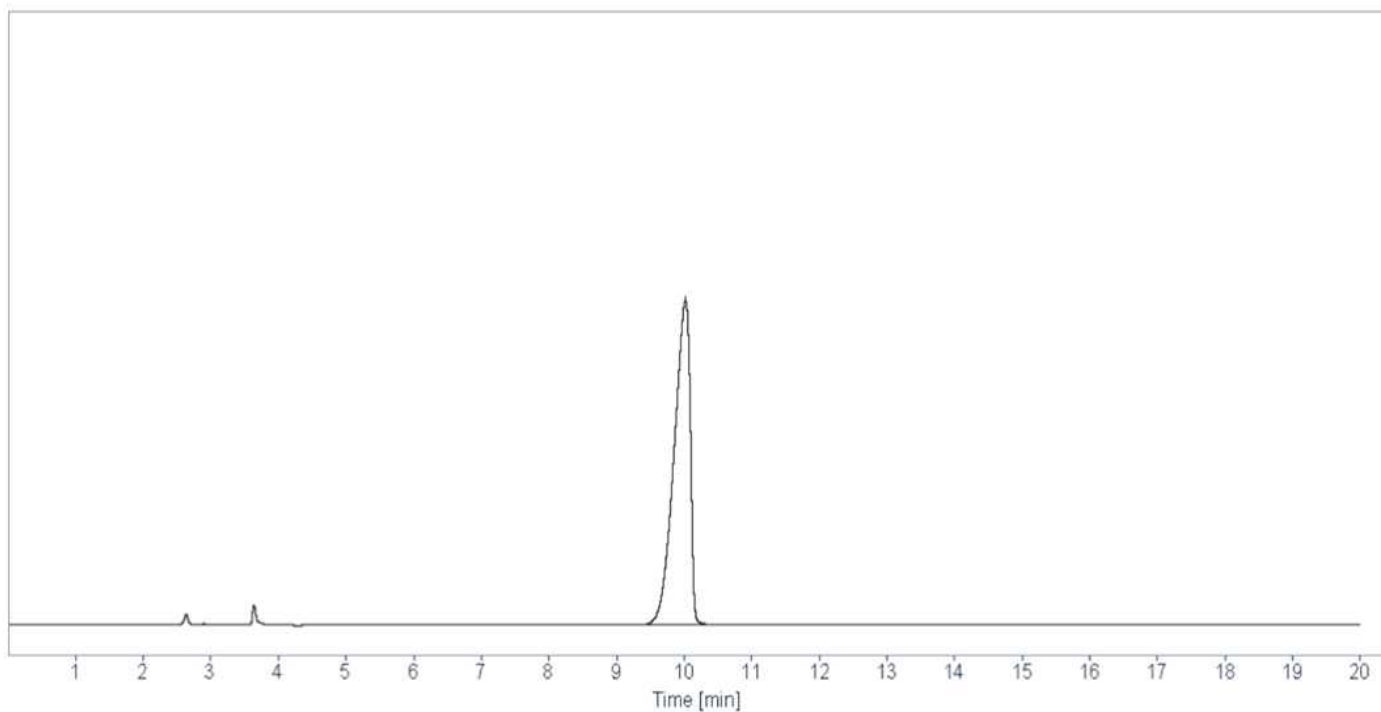


HPLC DATA SHEET

Pregabalin (EP, Related substances)



1. Pregabalin

HPLC condition

Column INNO Column C18-SB 5 μ m, 4.6mm I.d. \times 250mm (P/N 05NSB04625)

Buffer : Methanol= 80 : 20

Mobile Phase * Buffer : Dissolve 3.40g of potassium hydrogen phosphate in water to prepare 1L.
Adjust the pH to 6.3 with ammonia solution.

Flow rate 1.0 mL/min

Temperature 30 $^{\circ}$ C

Detector UV (210 nm)

Injection Volume 20 μ L