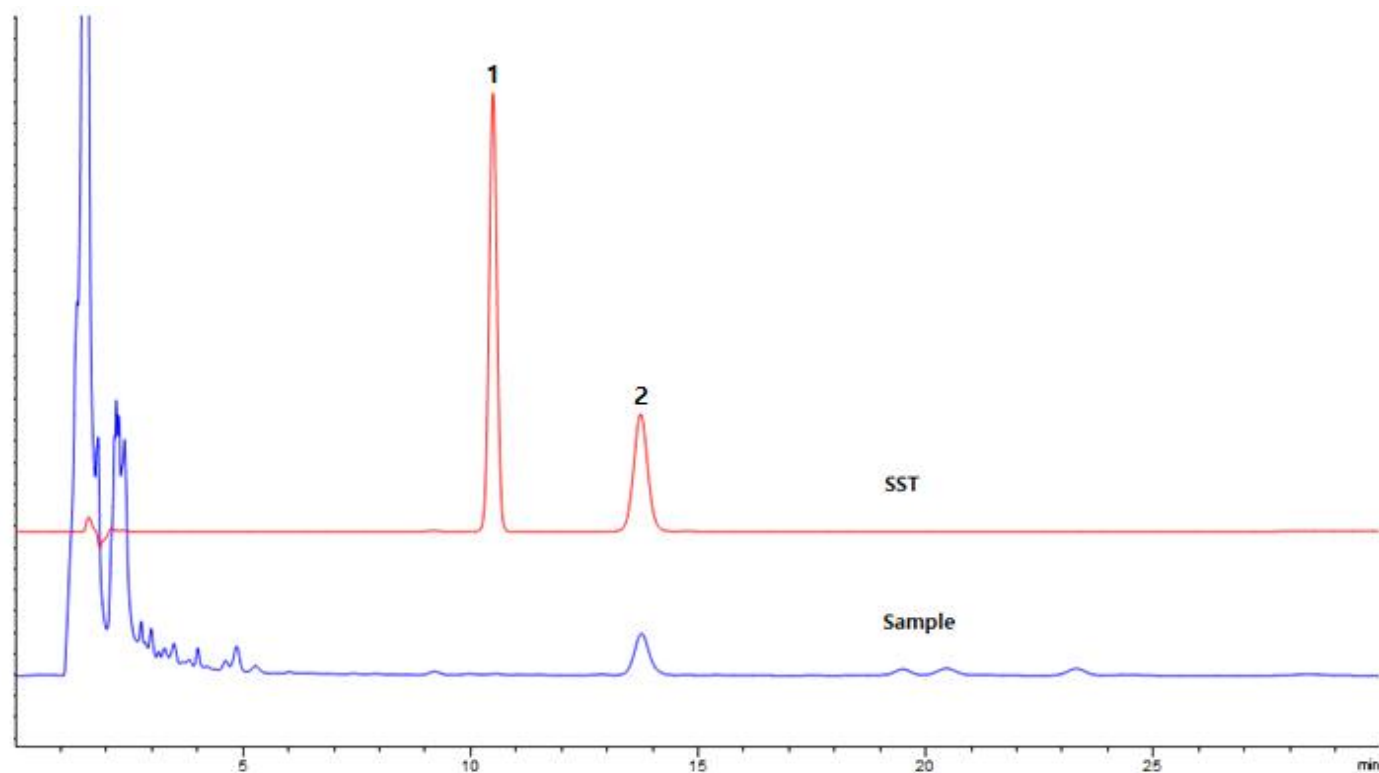


# HPLC DATA SHEET

## Glycyrrhizic acid (감초, KP, Assay)



1. Propyl paraben

2. Glycyrrhizic acid

### HPLC condition

Column INNO Column C18-HC 5um, 4.6mm I.d. × 250mm (P/N 05NHC04625)

Mobile Phase Diluted acetic acid (1→15) and acetonitrile mixture (3:2)

Flow rate Adjust the retention time of glycyrrhizin acid to about 10 minutes. (1.5 mL/min)

Temperature 25 °C

Detector UV (254 nm)

Injection Volume 20 uL