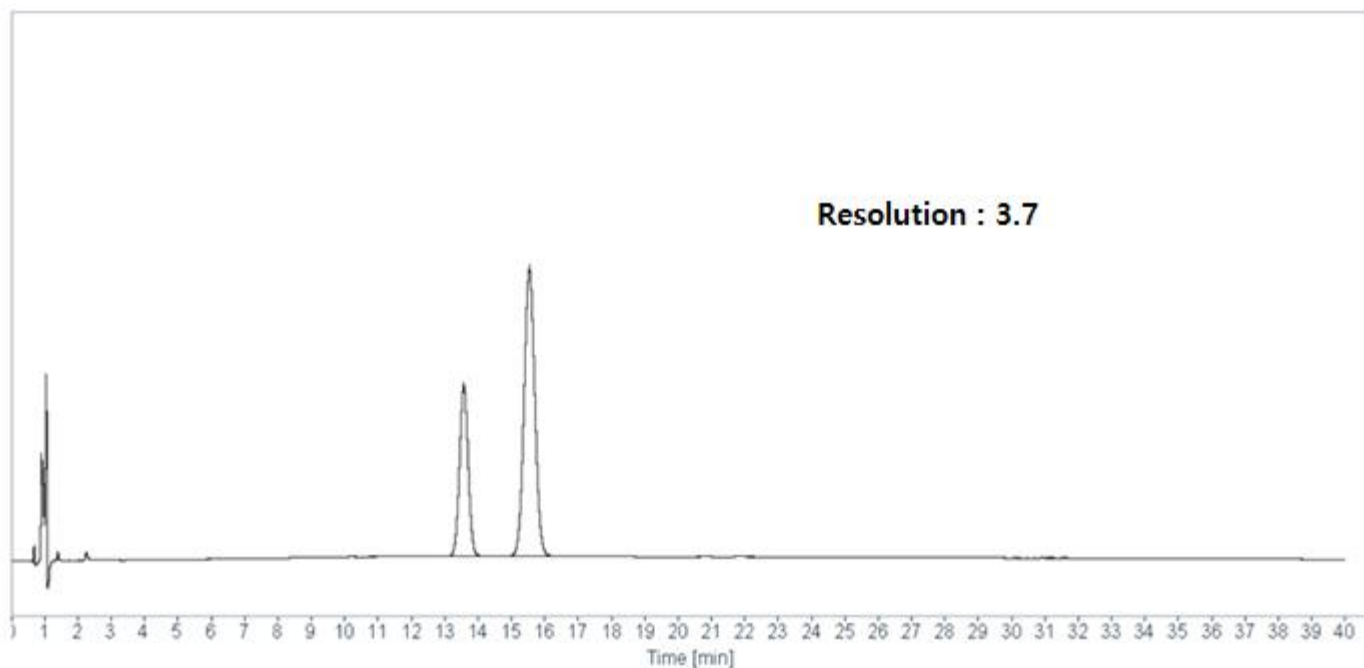


HPLC DATA SHEET

Ephedrine Hydrochloride (KP, Related substances)



1. Ephedrine 2. Atropine

HPLC condition

Column	INNO Column C18-NE 5 μ m, 4.6mm I.d. \times 150mm (P/N 05NE04615)
Mobile Phase	Sodium lauryl sulfate solution (1 \rightarrow 128) \cdot acetonitrile \cdot phosphoric acid mixture (640 : 360 : 1)
Flow rate	Adjust the ephedrine retention time to approximately 14 minutes. (about 1.7 mL/min)
Temperature	45 $^{\circ}$ C
Detector	UV (210 nm)
Injection Volume	10 μ L