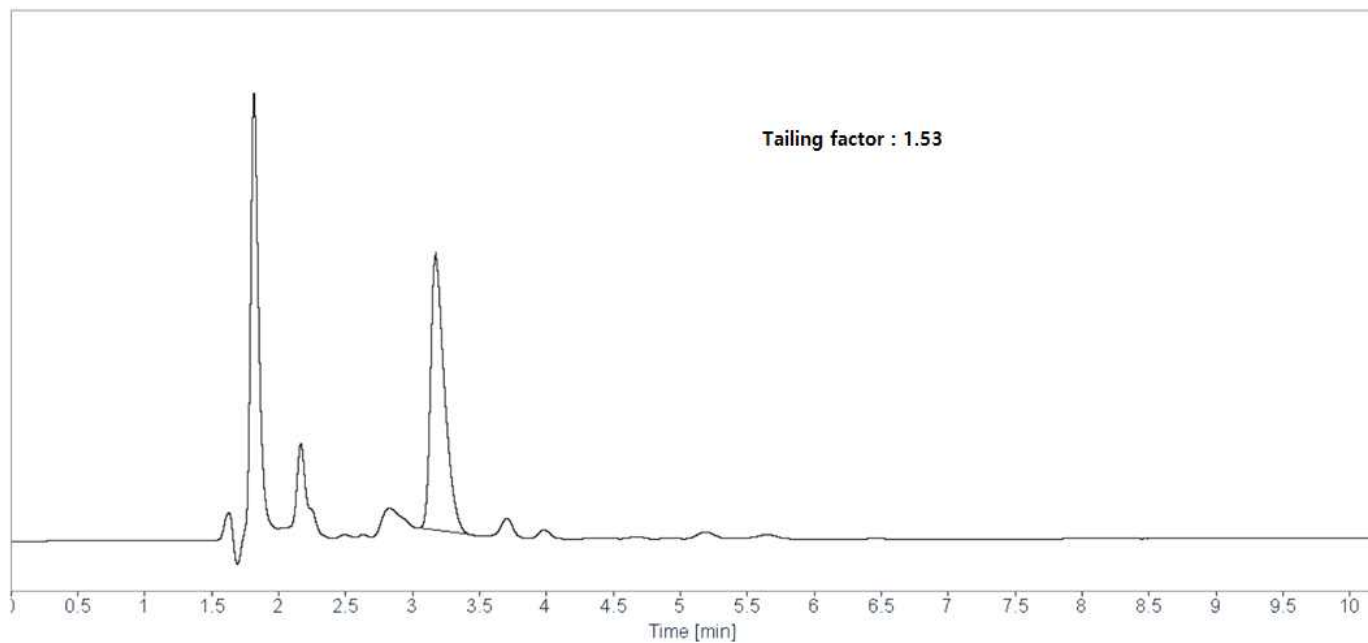


# HPLC DATA SHEET

## Clarithromycin (Assay)



### HPLC condition

Column	INNO Column C18-SB 5 $\mu$ m, 4.6mm I.d. $\times$ 150mm (P/N 05NSB04615)
	Methanol / Buffer = 60:40
Mobile Phase	- Buffer: Adjust 0.067 M dihydrogen phosphate solution to pH 3.5 with phosphoric acid
Flow rate	1.0 mL/min
Temperature	50 $^{\circ}$ C
Detector	UV (210 nm)
Injection Volume	50 $\mu$ L