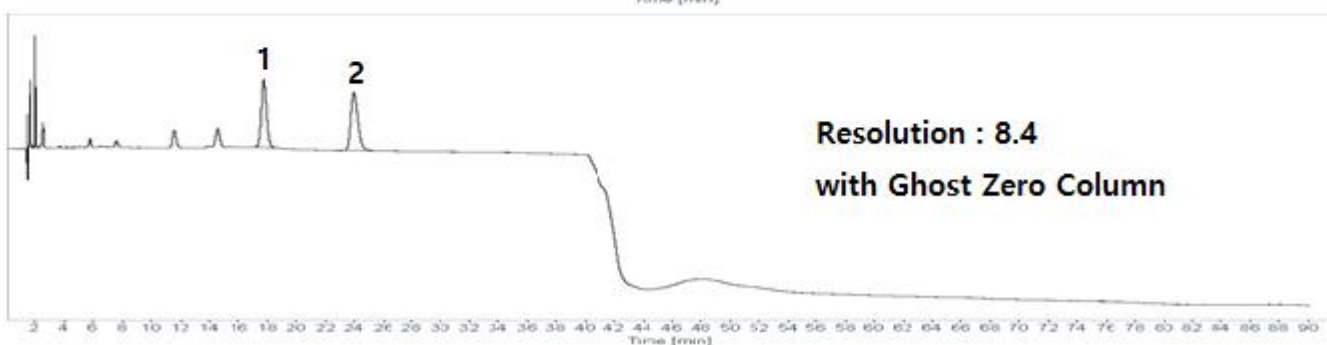
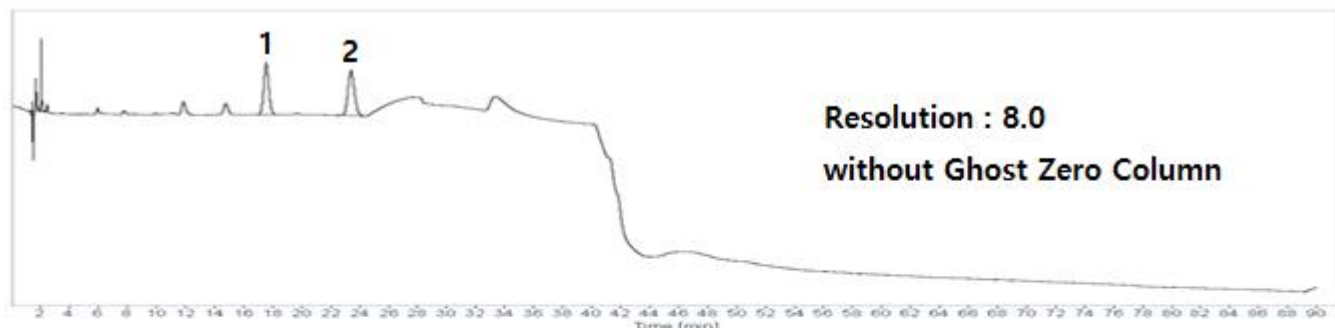


HPLC DATA SHEET

Roxithromycin (KP, Related substances)



1. N-dimethyl roxithromycin 2. Roxithromycin

HPLC condition

Column INNO Column C18-HC 5 μ m, 4.6mm I.d. \times 250mm (P/N 05NHC04625)

<Gradient system>

Time	Mobile phase A	Mobile phase B
0 ~ 38	100	0
38 ~ 39	100 \rightarrow 90	0 \rightarrow 10
39 ~ 80	90	10

Mobile Phase

– Mobile phase A : Add 510 mL of water to 200 mL of an ammonium dihydrogen phosphate solution (17 \rightarrow 100) and adjust the pH to 5.3 with a 2 mol/L sodium hydroxide reagent. Add 315 mL of acetonitrile to this solution.

– Mobile Phase B : 70% Acetonitrile

Flow rate Adjust the retention time of roxithromycin to approximately 21 minutes. (about 1.45 mL/min)

Temperature 25 $^{\circ}$ C

Detector UV (205 nm)

Injection volume 10 μ L