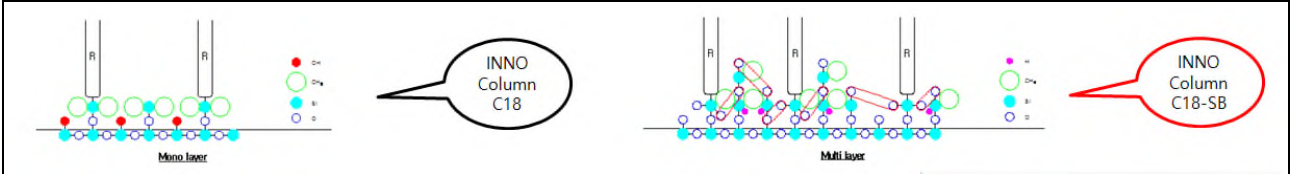


HPLC Column : INNO Column C18-SB

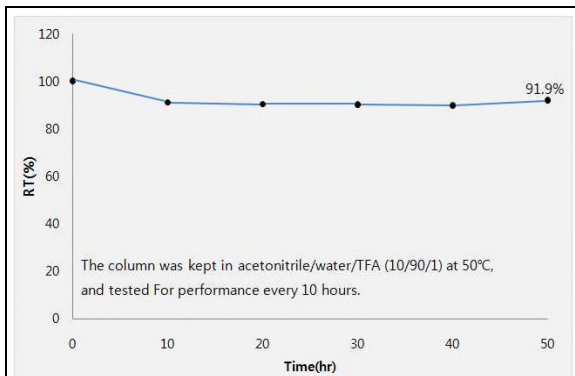
Multi-layer Technologies

C18을 합성한 후 스페이서 화합물을 이용해 다층 구조로 End-Capping을 했습니다.

무기입자인 실리카겔 표면을 유기층으로 덮어 실리카겔 표면이 이동상에 노출되는 것을 최대한 방어했기 때문에 내산성과 내염기성이 탁월합니다. (SB = Strong Base / Strong for Basic mobile phase)

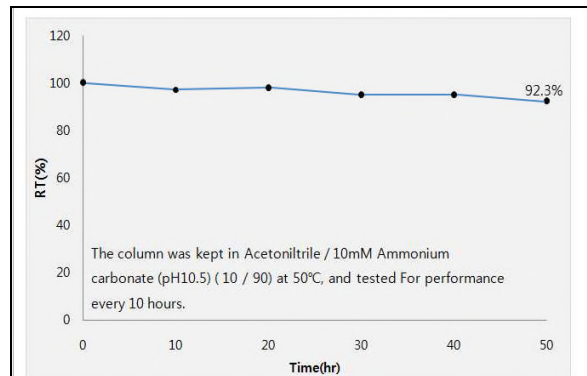


pH 사용 범위 = 1.0~11.0



(HPLC Condition)

Column : INNO Column C18-SB 5um 4.6x150mm
 Mobile Phase : acetonitrile / water = 60 / 40
 Flow rate : 1.0mL/min
 Temperature : 35°C
 Detector : UV 254nm
 Sample : n-Butyl benzoate



(HPLC Condition)

Column : INNO Column C18-SB 5um 4.6x150mm
 Mobile Phase : acetonitrile / water = 70 / 30
 Flow rate : 1.0mL/min
 Temperature : 35°C
 Detector : UV 254nm
 Sample : Phenanthrene

Specifications.

Pore Size(Å)	120	Surface Area(m ² /g)	320	Carbon Ratio (%)	17
End-Capping	Yes	pH Range	1.0~11.0	USP L Code	L1

esomeprazole Tablets _ 용출 분석

→ INNO Column C18-SB 5um 4.6 * 250mm (제품 번호 = 05NSB04625)

